

# Barnsley & Rotherham Chamber of Commerce has teamed up with award-winning Professional Energy Purchasing to provide Chamber Energy Services to members.

PEP is a Sheffield-based independent Energy Management specialist with over 30 years' experience in the energy market.

We work with all major utility companies in the UK to leverage the best prices for gas, electricity, and water for members. We have also saved companies over £100,000 in Climate Change Levy (CCL) tax rebates.

**Working in partnership**



**Barnsley & Rotherham  
Chamber of Commerce**  
Business. Always Business.



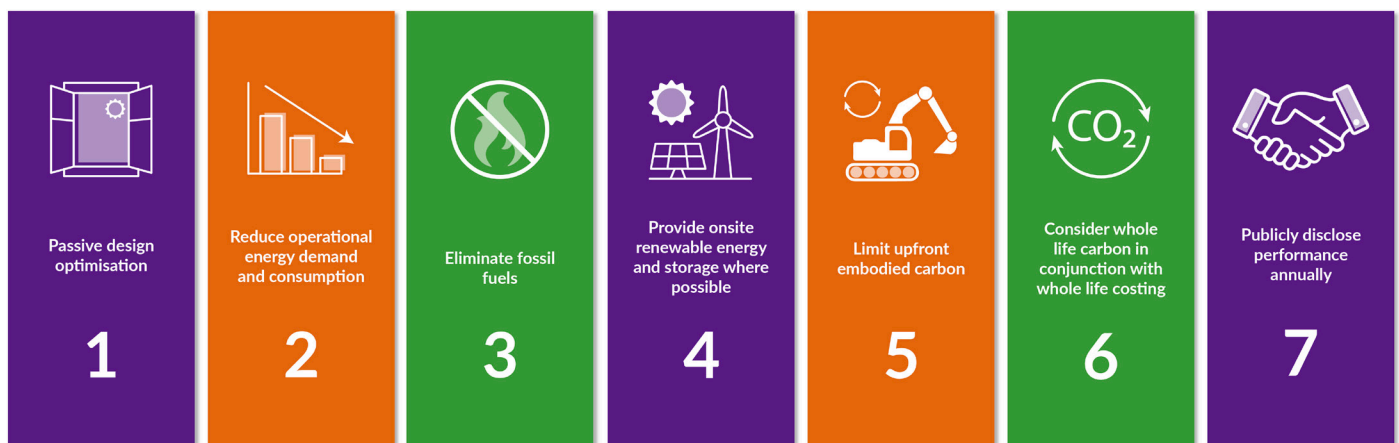
# Helping businesses move towards a Net Zero future

Our in-house energy specialists can help you build your Net Zero roadmap through energy management, reporting and efficiency targets.

## Our Net Zero service:

- ✓ Free initial consultation with energy specialist.
- ✓ Efficiency assessments of operational activity, building optimisation and uses of energy.
- ✓ Detailed report providing energy reduction proposals, renewable energy supply options, better building optimisation, behavioural change advice, investment costs and ROI payback periods.
- ✓ Support with policy, target setting and planning.
- ✓ Sourcing and project support for the implementation of renewable energy supply including Solar PV, Electric Charging Points, Lighting, Heating Ventilation & Air Conditioning, Battery Storage and Compressed Air upgrades.
- ✓ Help with energy legislation including ESOS and SECR.
- ✓ Green energy procurement and energy funding advice.

## Building a Net Zero roadmap



# Award-winning commercial energy procurement service

**Your PEP account manager will provide bespoke energy solutions, securing you the best electricity, gas and water prices for your business.**

## **Our procurement service:**

- ✓ Approved Energy Partner of Barnsley and Rotherham Chamber of Commerce for many years, helping members get the best energy prices for their business.
- ✓ A review of any existing contracts and provision of new options based on market prices and individual business requirements.
- ✓ Energy analysis to identify any unusual usage to look for savings.
- ✓ Management of gas and electricity installation, downgrading, relocation, or disconnection.
- ✓ Organising energy contract renewals on time to make sure members don't incur out of contract rates, which are usually considerably higher than contracted rates.
- ✓ Successfully helping companies recoup Climate Change Levy (CCL) tax rebates - over £100,000 savings in the last few years.
- ✓ Green energy choices to support sustainability targets.
- ✓ Co-ordination of contracts with any significant energy reduction plans.

## **Your account manager will:**

- Liaise with suppliers on your behalf;
  - Advise when it's the right time to buy;
  - Ensure any queries are managed quickly through our strict supplier service agreements;
  - Advise early about renewals to ensure best future prices;
  - Support you on any other energy management needs you have.
-



## Energy Solutions for Workwear Provider

Jason has been a huge support in helping us understand our consumption. He provided us with an in-depth report explaining what equipment needs upgrading and installing, the estimated costs with a five-year payback period, and future forecast savings. The findings could potentially save us 13.1 tonne of carbon per year and reduce our energy consumption by 33%. Understanding government legislation can feel like a minefield when trying to develop net zero plans. Jason made the entire process hassle-free providing advice on next steps to ensure the business successfully moves towards a low carbon future. Without the help and experience of PEP and Jason we couldn't have been able to take this first and very important step.

**Steve**

Arden Winch & Co Ltd



## Savings Success for Waste Management Team

Kayleigh at Professional Energy Purchasing has assisted us with a cost-effective solution for our energy requirements. We found her extremely easy to work with and the transition to our new energy supplier was seamless. Moving forwards, we envisage that we'll have a long-term relationship with PEP as they assist us in exploring sustainable energy options for the future.

**Natalie**

Russell Richardson